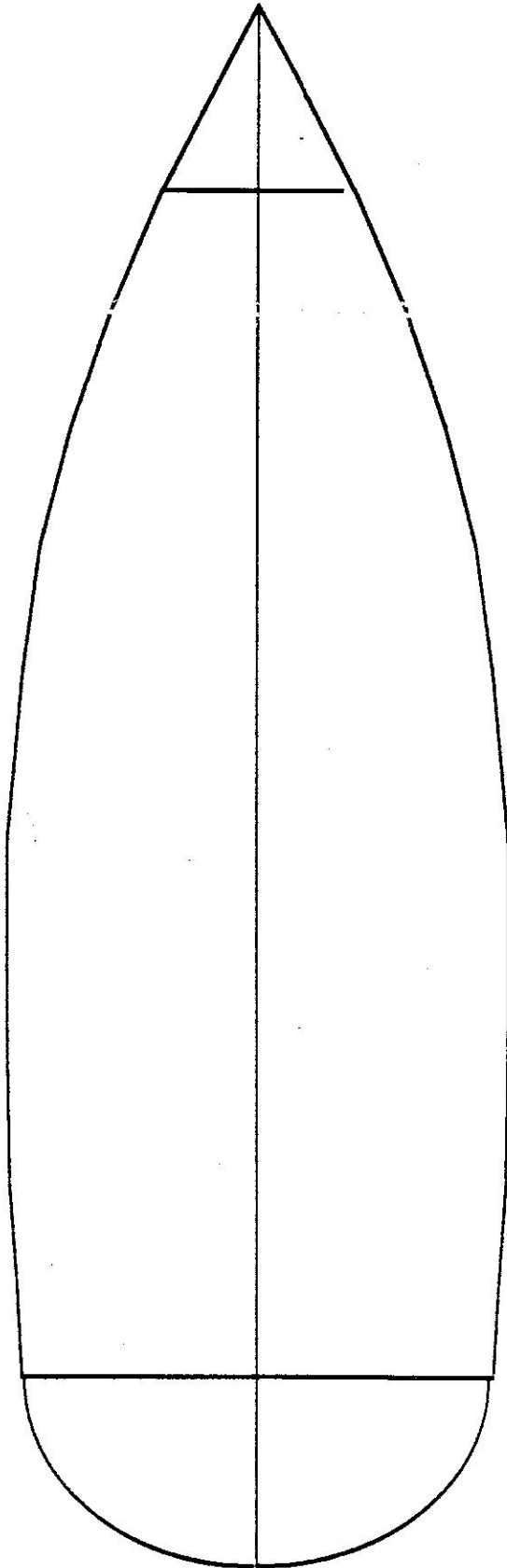


## LAYOUT 2



## ESSENTIAL GEAR LOCATIONS

- 1) PFDs
- 2) First aid kit (minor)
- 3) Lifesling hoist
- 4) Flares
- 5) Small tools / tool box
- 6) Specialized tools: rig cutters, stuffing box wrench, etc.
- 7) Anchor and rode
- 8) Damage control kit
- 9) Emergency tiller
- 10) Tape, wire, light line, etc.
- 11) Lubricants
- 12) Shackles and misc. hardware
- 13) Sail repair kit
- 14) Bosun's chair
- 15) Batteries, elec. supplies

## ABANDON SHIP NEEDS

- A) LIFE RAFT
- B) EPIRB
- C) GRAB BAG (survival and rescue gear)
- D) NAVIGATION PACKAGE (charts, instruments, ships papers)
- E) CREW GEAR (safety gear, extra food, water, clothing and equipment, personal ID)